

Figure 1. Increased uptake of vitamin B12- and biotin-targeted Rhodamine HPMA by Ov2008 tumour cells grown *in vitro*. Panels – Top left Rhodamine-HPMA; Top right Folate-Rhodamine-HPMA; Bottom left VitaminB12-Rhodamine-HPMA; Bottom Right Biotin-Rhodamine-HPMA

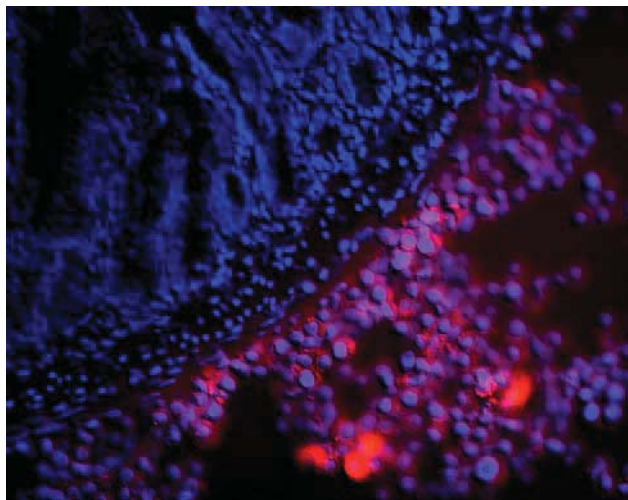
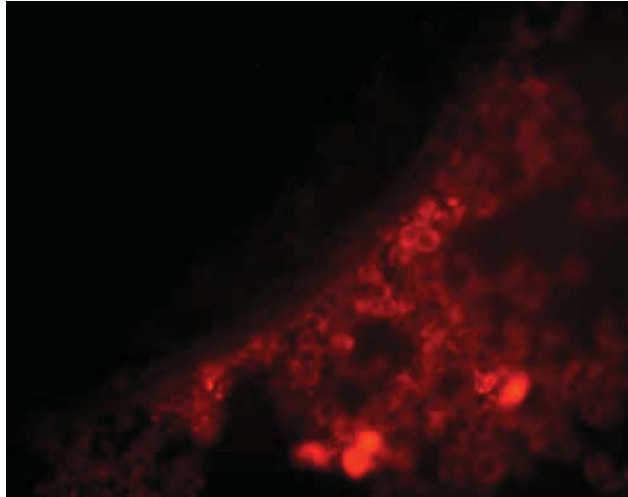
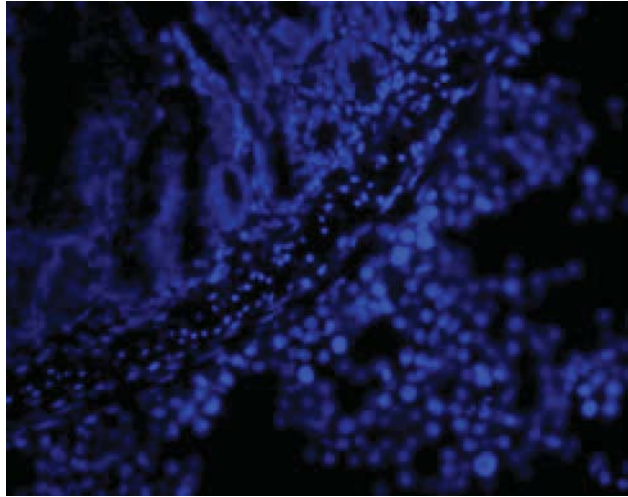


Figure 2. Increased uptake of biotin-targeted Rhodamine HPMA by M109 metastatic tumour cells grown *in vivo*. Panels – Top BisB stained cells; Middle Biotin-Rhodamine-HPMA; Bottom Biotin-Rhodamine-HPMA + BisB stained cells

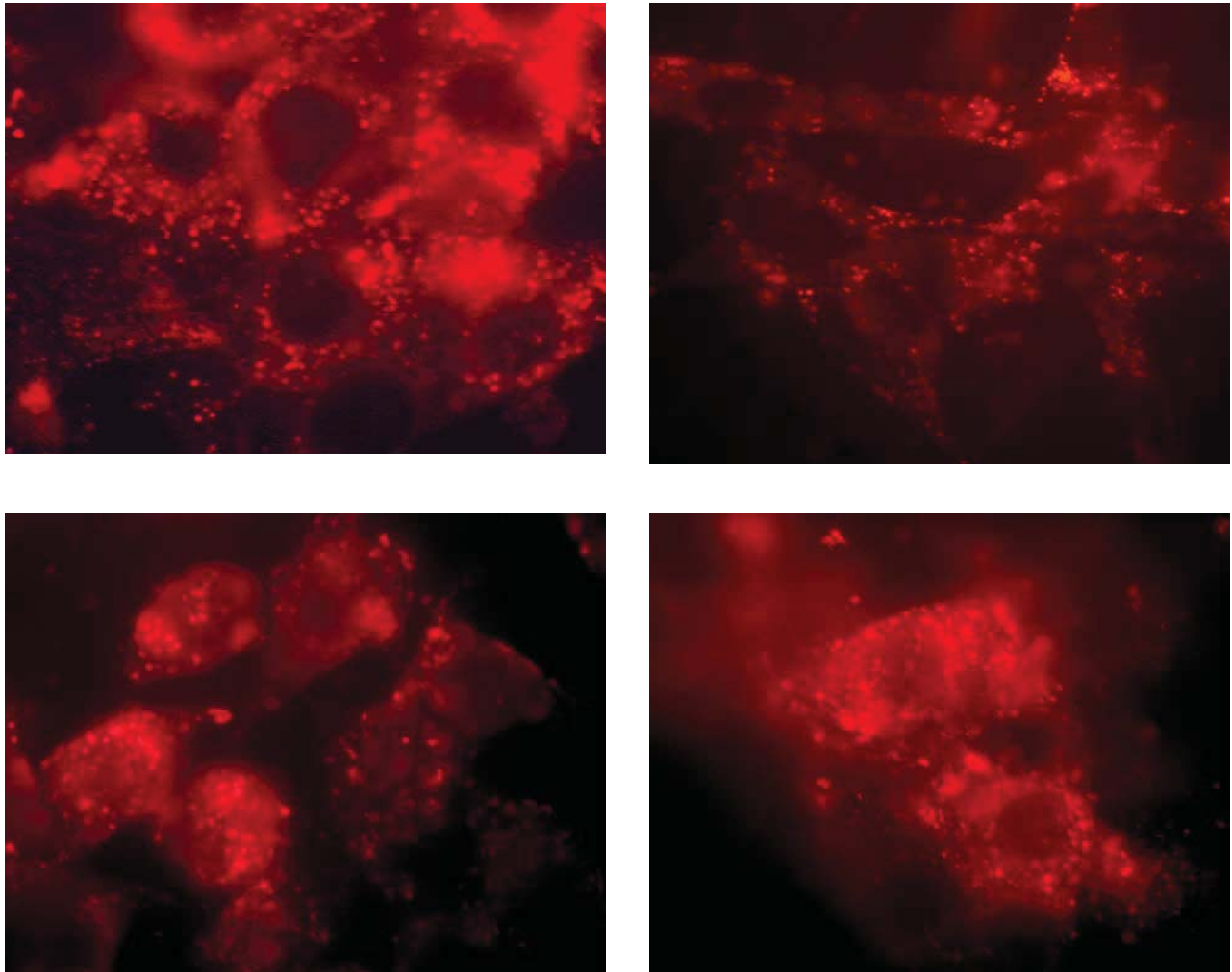


Figure 3. Punctate staining of internalized biotin-targeted Rhodamine HPMA by various tumour cell lines grown *in vivo*. Panels – Top Left ID8; Top Right MMT; Bottom Left Ov2008; Bottom Right RENCA

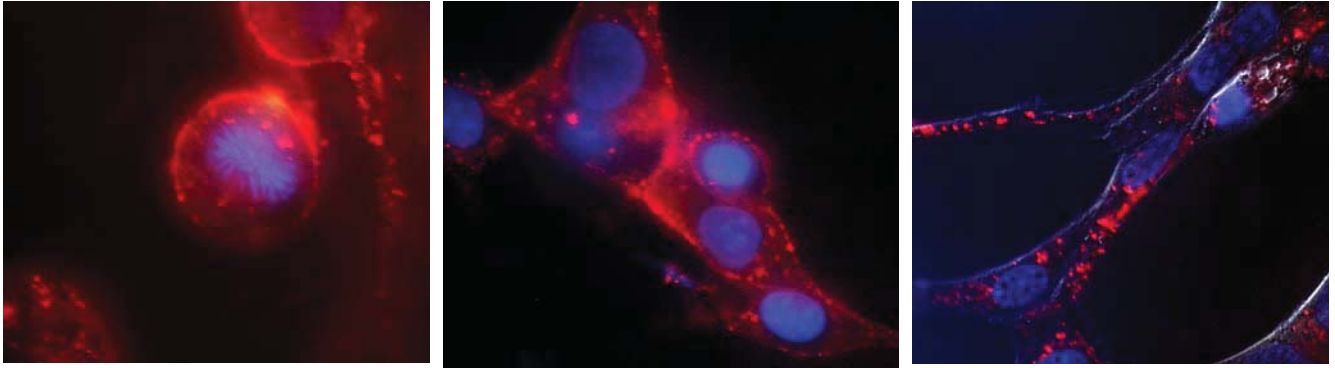


Figure 4. Surface binding and internalization of biotin-Qdots HPMA by RD995 cell line grown *in vivo*. Panels –Left 1 hour; Middle 1 hour; Right 5 hours. Blue colour BisB stained nuclei. Red colour biotin-Qdot